



For Windows 7 and Windows Vista, with IIS web server

---

Supports all editions of Windows 7 and Vista Business, Enterprise, and Ultimate editions

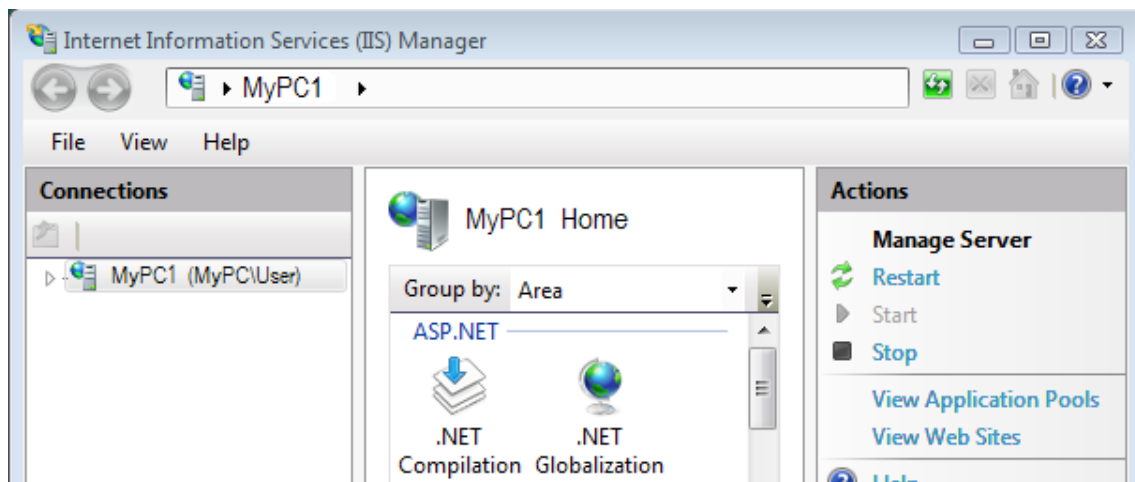
Using a Java-based web server? See our [Linux/Unix Quick Start Guide](#) instead.

This Quick Start Guide is intended for use by experienced developers who are *very* familiar with web applications, web server configuration, and their server operating system. For others, we offer a [detailed installation document](#) that provides more explanation.

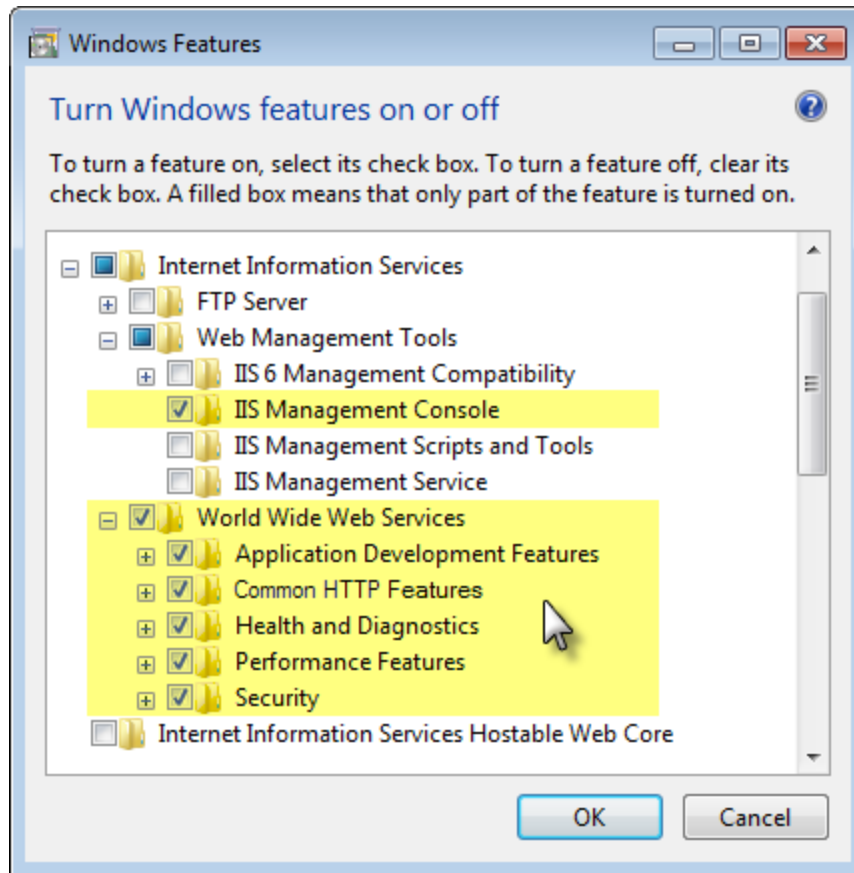
## 1 Check IIS installation

Ensure that Internet Information Services (IIS) is turned on:

- Start Menu → Run → “inetmgr” → OK



- If IIS Manager launches (as shown above), close it and go to next step
- “Windows cannot find ‘inetmgr’” error message:

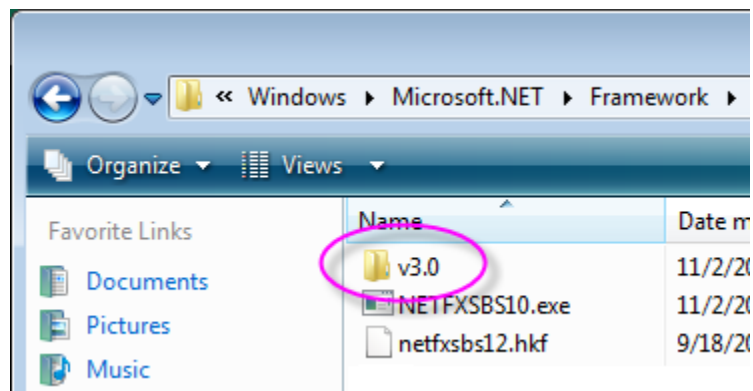


Use Control Panel → Programs → Turn Windows features on or off to turn on IIS before proceeding. Expand items to check sub-items to ensure all items shown above are checked!

## 2 Check .NET installation

Ensure that the .NET Framework is installed:

- In Computer, browse to: C:\Windows\Microsoft.NET\Framework

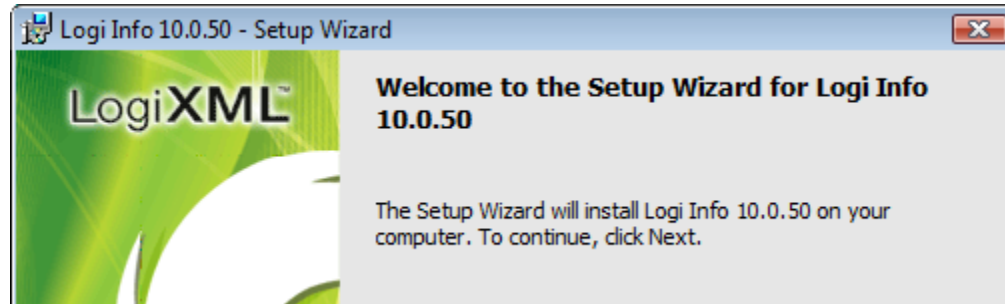


- If v2.xxx, v3.xxx, or v4.xxx folder exists, as shown above, go to next step

- If folder not found, install .NET framework (v2.0 minimum) before proceeding

### 3 Install your LogiXML product

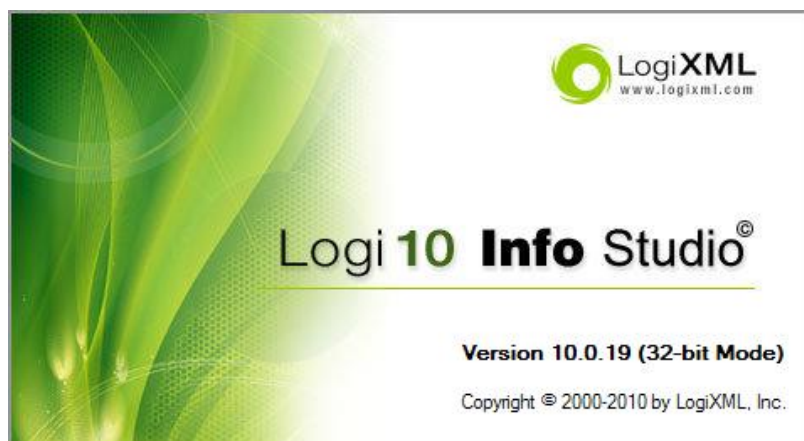
- *Right-click* downloaded LogiXML product installation file, select “Run as administrator” to start installation



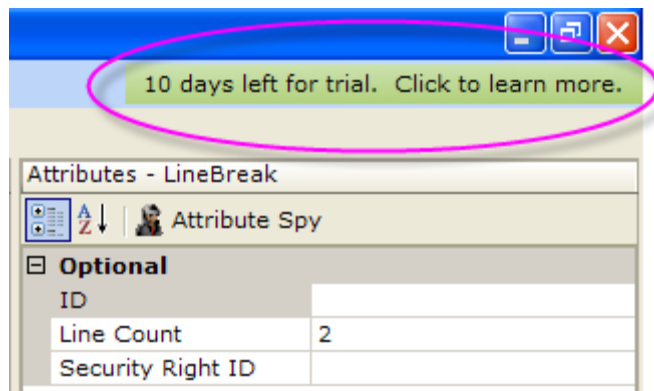
- Accept all default options, complete installation, continue to next step

### 4 Launch Studio

- Let installer launch Studio when installation completes, or launch it manually using Start Menu → All Programs → Logi Info or Report → Studio



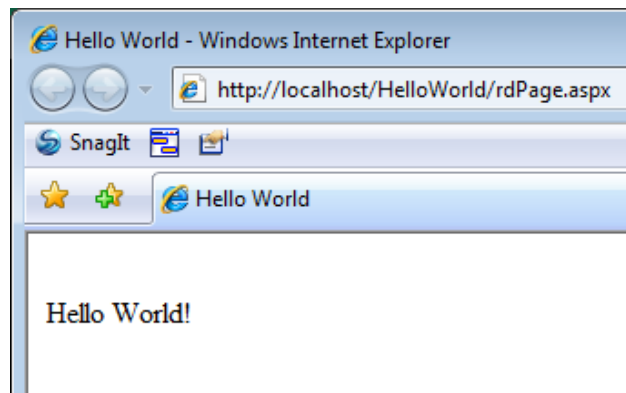
- All Logi 10 products include a 15-day trial license. *Products and reports cease to work when trial period ends.* Note expiration indicator in toolbar, shown below:



More information about licenses is available in our [Product Licensing](#) document.

## 5 Test your installation

- Test your installation with our [Hello World](#) application



- Installation problems? See the [detailed installation](#) document

## 6 Where to go from here

Additional resources:

- [Logi Architecture Overview](#)  
An introduction to the objects and concepts behind a Logi app

- [Using Logi Studio](#)  
How to use our intelligent design tool to create and test your Logi apps
- [Debugging Reports](#)  
How to turn on the Trace page and see what's going on "behind the scenes"
- [Sample Applications](#) for Logi Info and Logi Report are available that can show you how to apply a variety of techniques and help you get started.



Thanks for choosing LogiXML